

12 November 2014, Rev A

Serdashop.com

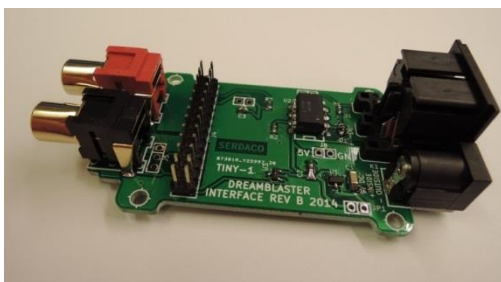
INSTRUCTIONS FOR ASSEMBLING A DREAMBLASTER S1 MIDI MODULE

Required parts :

a/ [Dreamface S1 Enclosure kit](#) :



b/ [DreamFace S1 interface board](#)



c/ [Dreamblaster S1 module](#)

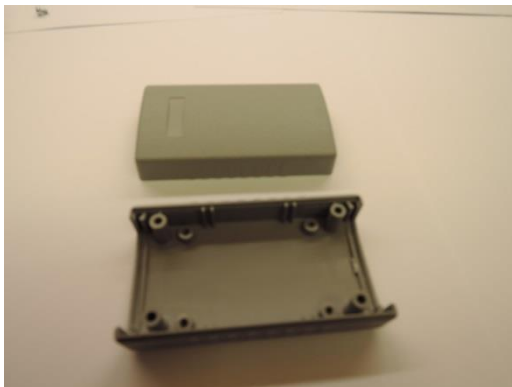


Assembly Steps :

1/ Take the enclosure top and bottom. Put them on the table as shown.
The bottom has 4 screw holes at the outside.



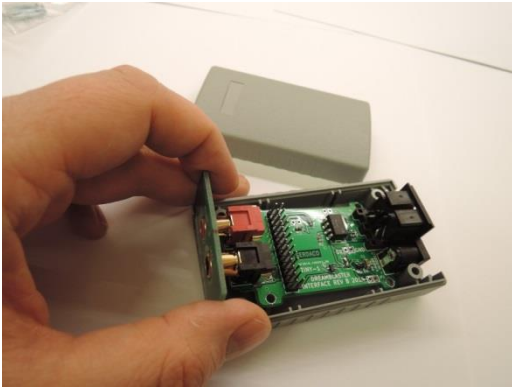
2/ Turn the bottom shell towards you



3/ Place the interface PCB into the bottom shell



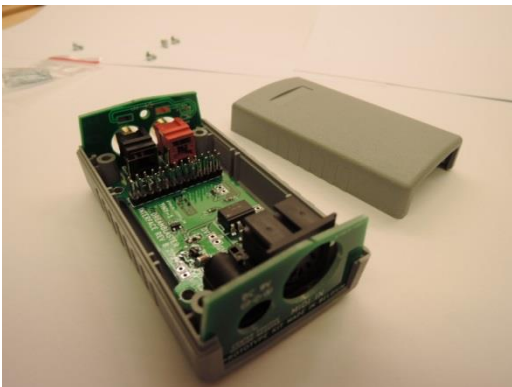
4/ Lift the PCB a little bit, to place the line out panel



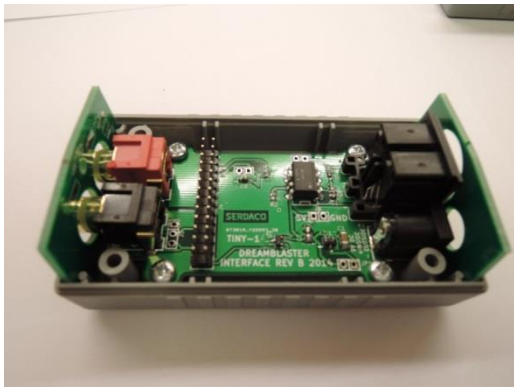
5/ line out panel correctly placed



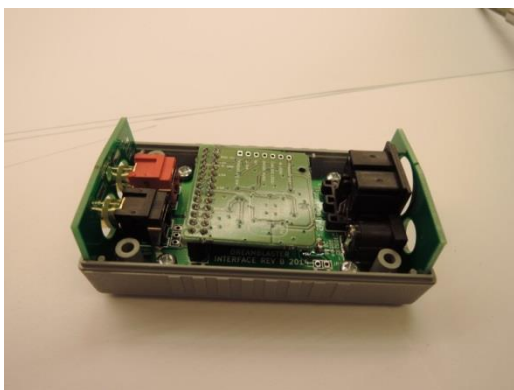
6/ insert the midi/power panel



7/ use the small screws to fix the interface PCB



8/ Install the Dreamblaster S1 module on the header



9/ Put the enclosure top on the assembly



10/ Turn the box upside down, and mount the long screws



11/ Your Dreamblaster S1 module is ready !!!



Have fun !

Take care to use the correct polarity for the power supply : 9V DC, + inside.

You can order a suitable power supply (EU plug) by selecting it in the shopping cart options for the interface PCB.